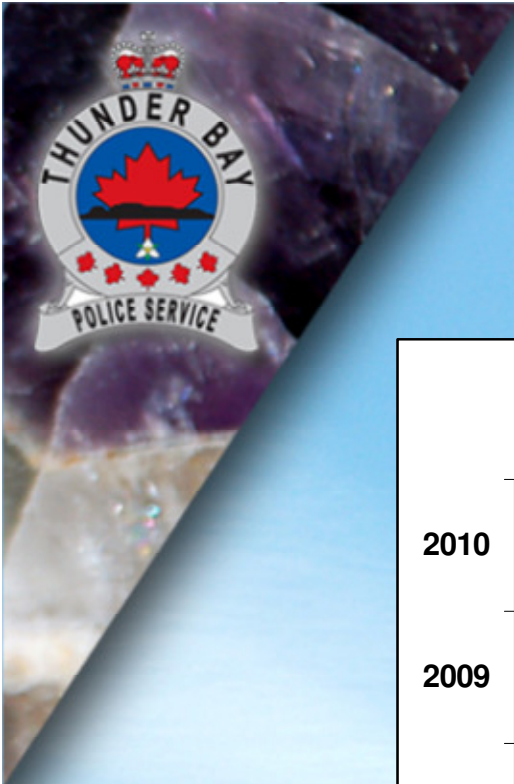


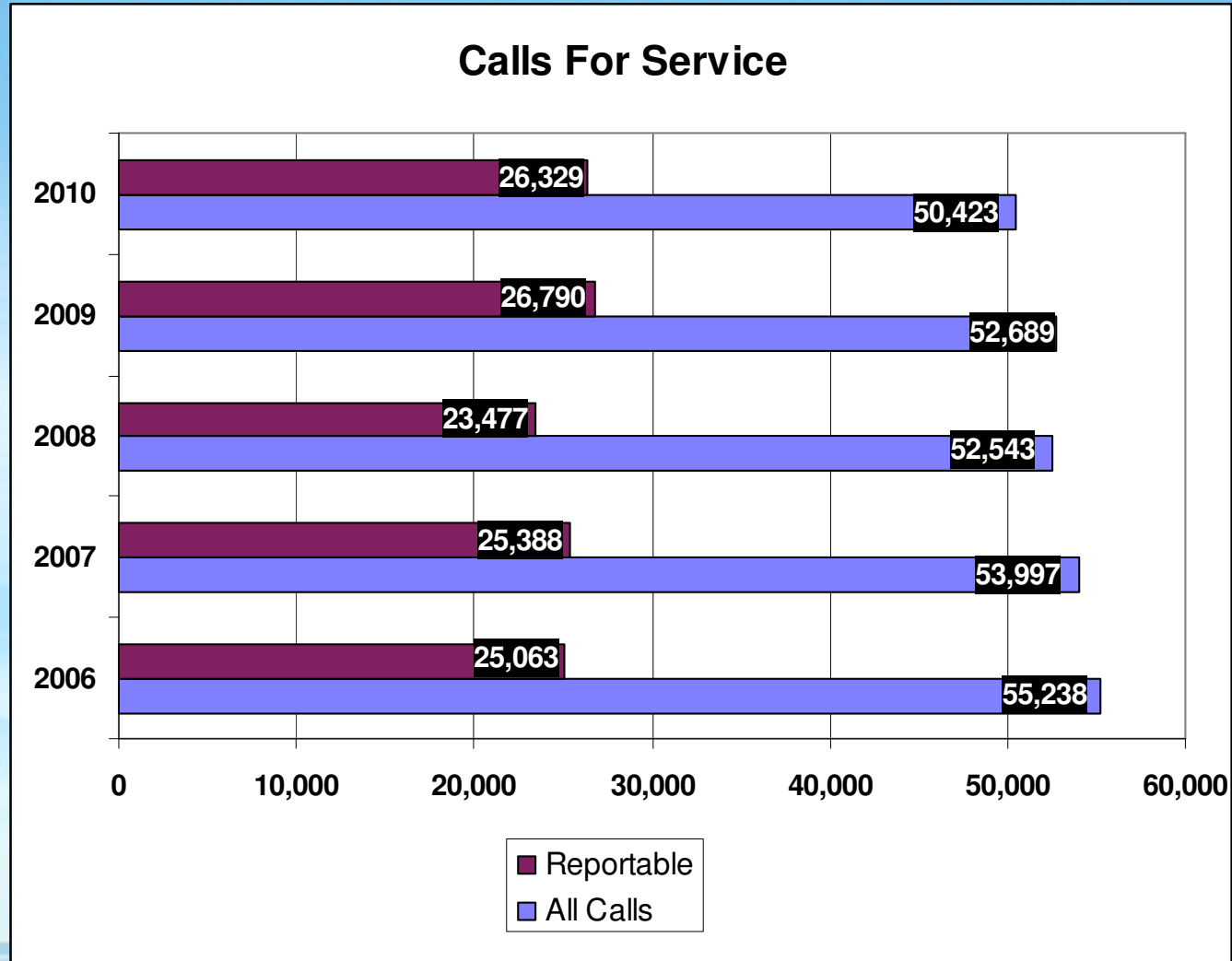


J.P. Levesque
Chief of Police





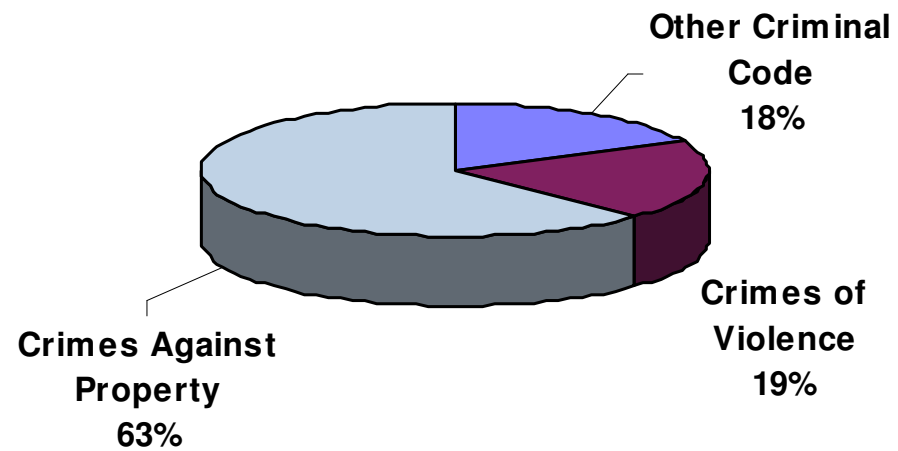
Calls For Service





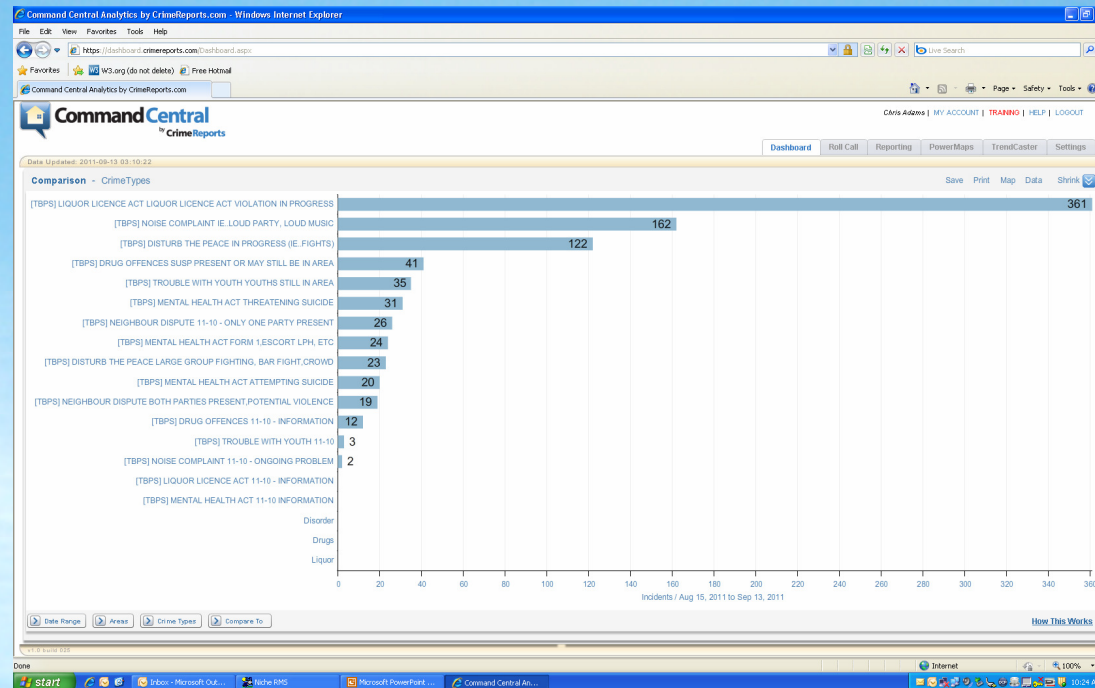
Crime

CRIMINAL CODE SUMMARY--2010





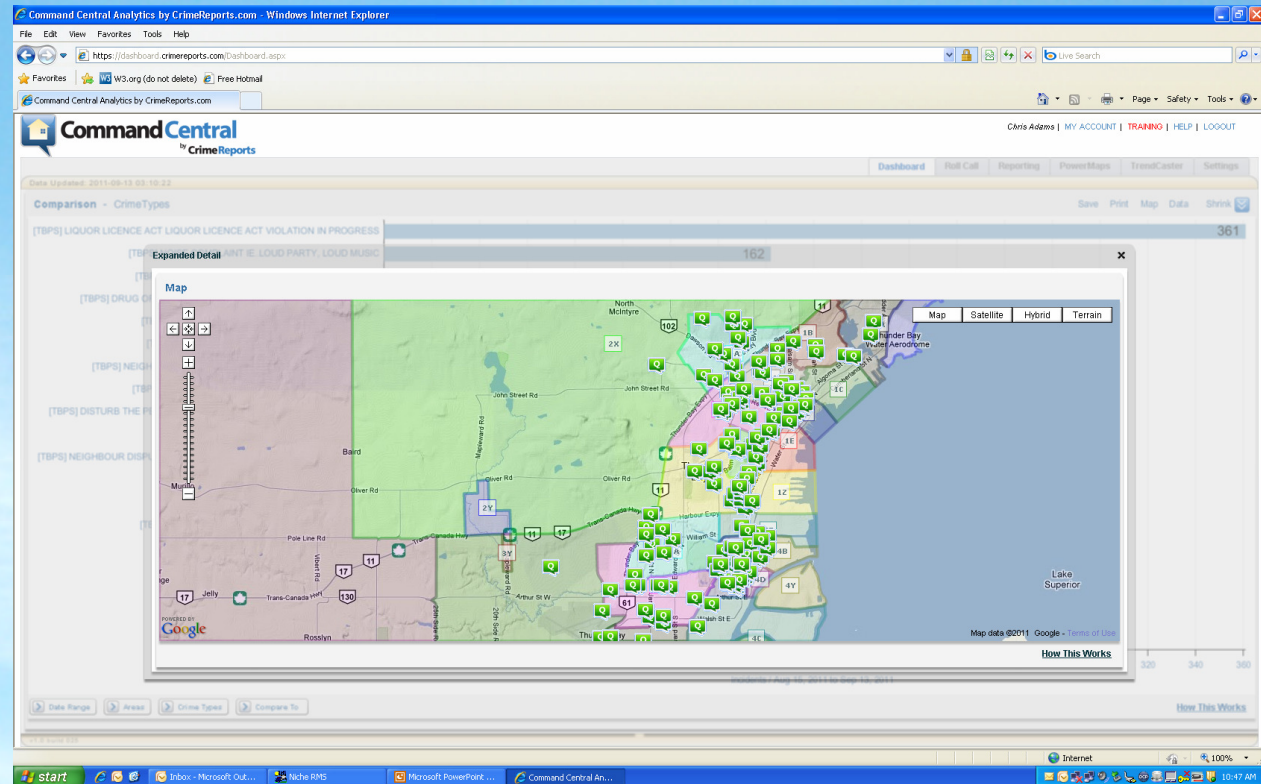
30 Days of Disorder: *What We Face Is Unique In Ontario*



August 15 to September 13 2011
Over 361 calls for intoxicated persons!



30 Days of Disorder: *What We Face Is Unique In Ontario*



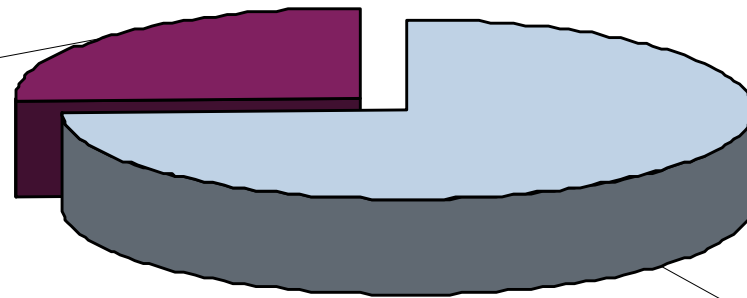
City wide!



Provincial Offences: *Nearly 9,000 Charges in 2010*

2010 Provincial Offences

Other Provincial
Offences
26%



Liquor
74%



Perspective

- Toronto Population = 2,480,000
- **T.B.P.S. Jurisdiction = 116,940**
- Toronto LLA Charges = 19,633
- **Thunder Bay LLA = 6,607**

** 2010 Statistics – all LLA charges*



Perspective

- *If Toronto had the same rate of LLA Offences as Thunder Bay:*

**Toronto would have had
140,729 LLA Offences!**

** Toronto's population is 21.3 times larger than ours*



Social Issues = Policing Issues

- **Majority of violent crime:**
 - *The victim and offender are known to each other*
- **Thunder Bay Police Service deals with a higher than average number of incidents involving substance abuse**
- **A box store in Thunder lost over 1,000 bottles of mouthwash in one year!**
- **Substance abuse and addiction fuels crime**



Social Issues = Policing Issues

Broken Families – Broken Lives

- **High number of youth in the care and control of social services**
- **Little or no family support for these youths**
- **Police become the final link in the chain**



What is out of our Control?

Example: Young Offenders

- North end B&E crime spree
- Teenage leader of an organized group responsible for over \$100,000 worth of residential B&E's
- The revolving door of justice



What is out of our Control?

How do you prevent a violent assault or homicide when:

- victim and accused are known to each other
- one or more are intoxicated
- the crime occurs behind closed doors



Setting Priorities For Your Police Service

Chamber of Commerce Members Were Asked:

- What are your top risk factors?

Members said:

1. Criminal Activity
2. Substance Abuse
3. Violence
4. Mental Health
5. Disorder
6. Traffic Safety



Setting Priorities For Your Police Service

Chamber of Commerce Members Were Asked:

- What should the top priorities for the Thunder Bay Police Service be?
1. Crime Prevention
 2. Enforcement
 3. Visibility



Your Police Service

J.P. Levesque
Chief of Police

jp.levesque@thunderbaypolice.ca

Chris Adams
Executive Officer

chris.adams@thunderbaypolice.ca